

Ontario Public Health Standards and Protocols Foundations

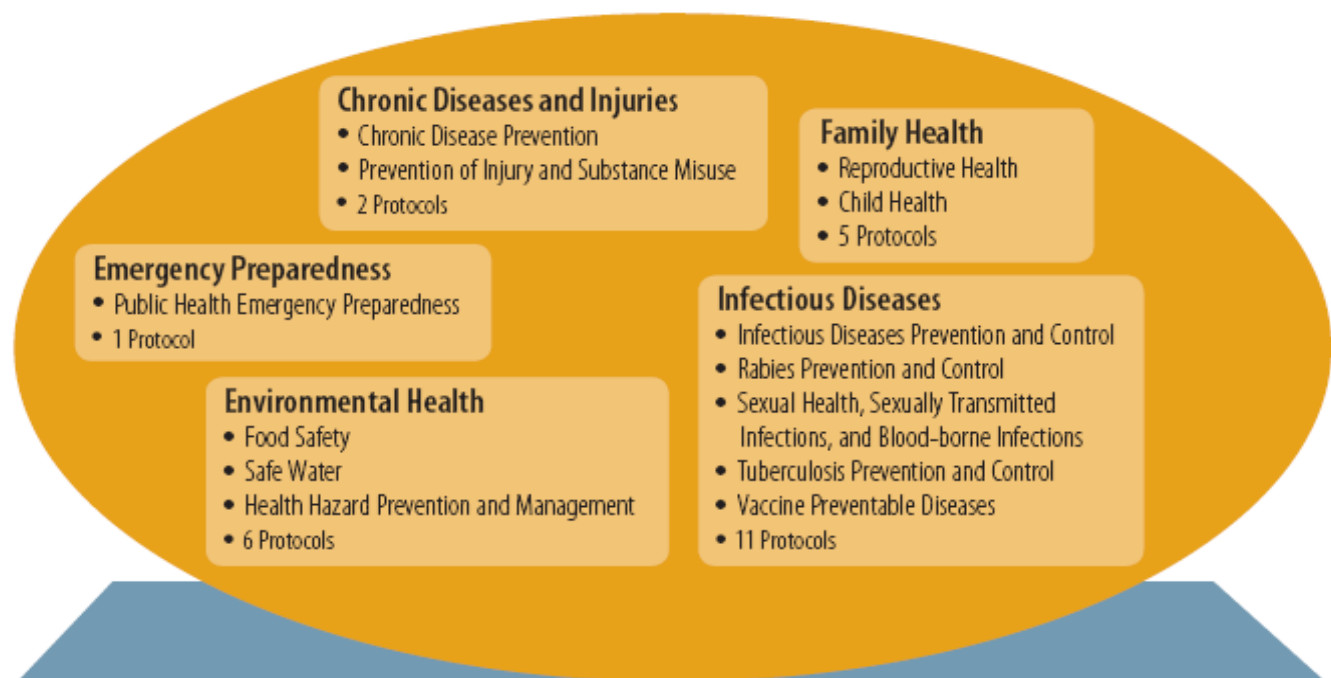
Foundational Standard Workshop
November 14, 2008

Purpose

- The purpose of this presentation is to discuss the OPHS Foundations:
 - Principles
 - Foundational Standard

OPHS "Atlas"

Program Standards and Protocols



Foundational Standard and Protocol

Population Health Assessment
Surveillance
Research and Knowledge Exchange
Program Evaluation
1 Protocol

Principles



Need



Impact



Capacity



Partnership and
Collaboration

OPHS- Determinants of Health

- The health of individuals and communities is significantly influenced by complex interactions between social and economic factors, the physical environment, and individual behaviours and conditions referred to as the determinants of health, and together they play a key role in determining the health status of the population as a whole
- Addressing determinants of health and reducing health inequities are fundamental to the work of public health in Ontario
- Effective public health programs and services consider the impact of the determinants of health on the achievement of intended health outcomes

OPHS- Determinants of Health cont'd

- A key component of the requirements outlined in the OPHS is to identify and work with local priority populations.
- Priority populations are identified by surveillance, epidemiological, or other research studies and are those populations that are at risk and for whom public health interventions may be reasonably considered to have a substantial impact at the population level
- The OPHS incorporate and address the determinants of health throughout, and include a broad range of population-based activities designed to promote the health of the population and reduce health inequities by working with community partners

Determinants of Health

- Income and social status
- Social support networks
- Education and literacy
- Employment/working conditions
- Social and physical environments
- Personal health practices and coping skills
- Healthy child development
- Biology and genetic endowment
- Health services
- Gender
- Culture
- Language

The OPHS- Priority Populations

- Language of priority populations purposeful:
 - Moves away from vulnerable and target populations;
 - Transforms to priority populations to reflect local and context specific-issues;
 - Acknowledges OPHS Principles; and
 - Scope of public health services and programming.

The OPHS – Issues and Populations I

- Linkages across the Standards shift from the 1997 General Standard of equal access to the OPHS themes of equity and priority populations within issues
- The OPHS move away from identifying populations and their issues, and put the focus on the issues and their (sub-) populations as driven through the Principles and Foundations of the OPHS
- Population health outcomes are influenced disproportionately by sub-populations who experience inequities in health status and conditions which may promote, protect, or sustain their health

The OPHS – Issues and Populations II

- Tailoring programs to meet the needs of priority populations, by identifying the distribution of the social determinants of health, improves the overall health of a population
- Through focusing on the issues, rather than the populations throughout the Standards, allows for greater flexibility and responsiveness without the prescriptiveness of focusing on populations which may not in fact be a local programming priority
- Allowing for increased flexibility vis-à-vis programming based on local needs allows for greater responsiveness and innovation into focusing onto important and pressing issues and priority populations in a timely manner that may change and evolve over time

The OPHS Foundations: Principles

- The OPHS and Protocols are under-pinned by Principles and Foundational Standard
- OPHS Principles: “To ensure that boards of health assess, plan, deliver and manage public health programs and services to meet local needs, while continuing to work towards common outcomes, outcomes, boards of health shall adhere to the following principles: ***Need; Impact; Capacity; and Partnership and Collaboration***”
- Weaving values tightly into practice models through the OPHS Principles sets public health practice in context by including the environment as a routine component of planning

The OPHS Foundations: Principles

Need

- The principle of need acknowledges the importance of using data and information to inform decision-making at the local level regarding program assessment, planning, delivery, management and evaluation
- Need is established by assessing the distribution of the determinants of health and incidence of disease frequency
- The principle of need must be continuously applied at all levels of program and service delivery to ensure optimal performance
- Boards of health must continuously tailor programs and services to address the unique needs of their communities and populations and to contribute to the improvement of overall population health outcomes with an emphasis on the determinants of health and inequities in health

The OPHS Foundations: Principles

Impact

- The principle of impact acknowledges the role of public health in influencing broader societal changes to reduce disparities in health and in addressing the determinants of health in public health programs and services
- Boards of health must assess, plan, deliver and manage their programs and services by considering the following:
 - √ Is there reasonable evidence of the effectiveness of the intervention in the scientific literature or in reviews of best practices?
 - √ Are the interventions compatible with the scope of programming for boards of health?
 - √ What are the barriers to achieving maximum health potential for individuals, groups, and communities and to narrowing inequities in health?
 - √ What relevant performance measures exist or can be developed to assess the impact and effectiveness of programs and services?
 - √ Do interventions have unintended consequences that need to be further assessed to improve understanding of the program itself of the context in which it is being implemented?

The OPHS Foundations: Principles

Capacity

- The principle of capacity acknowledges that an understanding of local public health capacity, as well as the resources required to achieve outcomes, is essential for the effective management of programs and services
- Capacity includes many areas: organizational structures and processes; workforce planning, development and maintenance; information and knowledge systems; and financial resources
- Boards of health must assess their capacity with respect to the breadth and scope of programs and services in relation to the skill levels of staff, the accessibility of relevant and timely information, and the financial implications involved in achieving the desired outcomes for their populations
- The principle of capacity also speaks to the importance of building and sustaining need for staff with both the technical and professional skills including core competencies in public health and public health disciplines

The OPHS Foundations: Principles

Partnership and Collaboration

- The principle of partnership and collaboration acknowledges the importance of community capacity development through cooperation within the health sector and other sectors
- Boards of health must foster the creation of supportive environments for health through community and citizen engagement in the assessment, planning, delivery, management and evaluation of programs and services – to support improved local capacity to meet the public health needs of the community
- The quality and scope of local partnerships is an essential indicator of success for boards of health in achieving and maintaining the leadership role required to create the conditions necessary for effective change
- Boards of health shall continually monitor and evaluate local partnerships and collaborations to determine their effectiveness

The OPHS Foundational Standard

- Through evidence-informed program planning and service delivery, public health practice is responsive to the local needs and emerging issues of the health unit
- Using the best possible evidence to inform programmatic decision-making ultimately improves public health programs and services

Shift from Mandatory Programs to OPHS

- Equal Access
- Program Planning and Evaluation



- Foundational Standard

Goals of the Foundational Standard

- Goal:
 - Public health practice response effectively to current and evolving conditions, and contributes to the public's health and well being
- Societal Outcomes:
 - Population health needs are anticipated, identified, and evaluated;
 - Emerging threat to the public's health are prevented or mitigated; and
 - Community-based planning and delivery of public health programs and services incorporate new public health knowledge

Foundational Standard - Board of Health Outcomes I

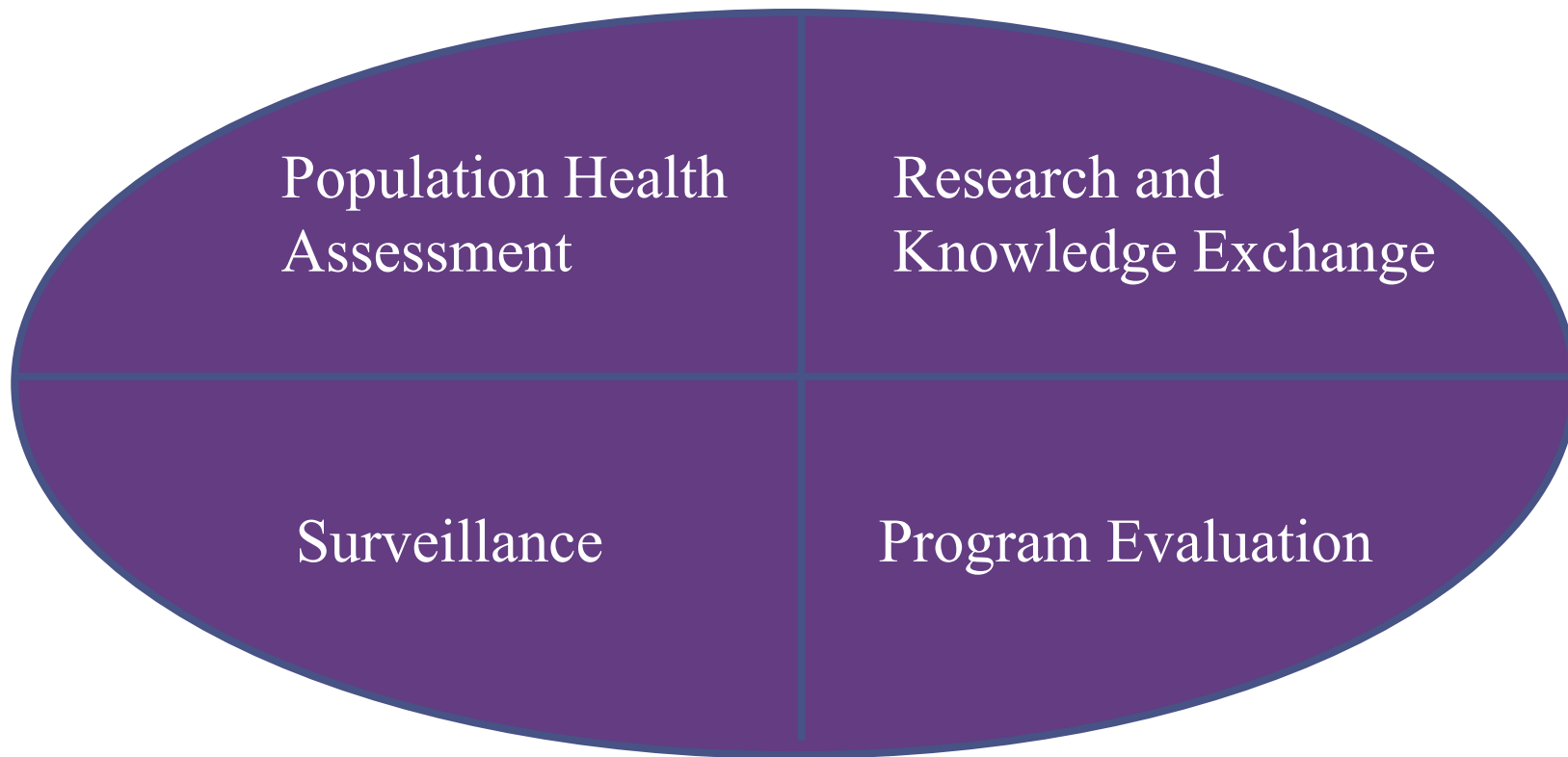
- Public health programs and services are planned and implemented to address local population health needs
- The public, community partners, and health care providers are aware of relevant and current population health information
- The board of health identifies public health priorities, including identification of emerging public health issues
- The board of health allocates resources to reflect public health priorities and reallocates resources, as feasible, to reflect emergent public health priorities
- Relevant audiences have available information that is necessary for taking appropriate action

Foundational Standard - Board of Health Outcomes II

- Public health practitioners, policy-makers, community partners, health care providers, and the public are aware of the best available research regarding the factors that determine the health of the population and support effective public health practice
- The board of health has effective partnerships with community researchers, academic partners, and other appropriate organizations to support public health research and knowledge exchange
- The board of health identifies program implementation issues in a timely and effective manner
- Public health practitioners and policy-makers are aware of the effectiveness of existing programs and services, as well as of factors contributing to their outcomes

The OPHS Foundational Standard

- The OPHS includes a Foundational Standard which is intended to acknowledge and reinforce the importance of foundational public health activities to under-pin the planning, delivery and evaluation of all public health programs and services – including each of the Program Standards in the OPHS



Linkages I

- The OPHS, and in particular the Foundations have become important guide posts for public health action at a time when public health system performance is under increased scrutiny
- There is an increased emphasis on ensuring effective public health practice which requires a number of efforts designed to increase the capacity for evidence-informed decision making as operationalized through the Principles and Foundations of the OPHS

Linkages II

- As knowledge develops so does new practice. The Principles and the Foundational Standard provide the framework to inform evidence-based public health programming and services based on the best possible evidence as applicable to the local needs of boards of health
- Information alone will not result in change so incorporation of best practices and evidence into routine decision making in public health organizations requires capacity building and organizational learning focused on developing communication strategies, enhancing knowledge and skill bases, creating supportive infrastructures, and allocating implementation support

Feedback from the field

- Welcome addition to the renewed standards and that evidence-based planning and performance is an effective tool for responding to measurable gaps in service and evolving public concerns.
- Overarching, encompasses the elements of prudent public health practice. Comprehensive and detailed, yet provides flexibility for local boards of health for program planning and implementation.
- Need for effective pro-active planning and performance monitoring
- Raising the level of dialogue around important decisions

Implementation Issues

- January 1, 2009
- Challenges in operationalizing components of the Foundational Standard
- Capacity has been highlighted as a key issue in feedback from the field
- Significant variation across public health units
- Gaps in Data and Standardized Indicators for health status reporting are acknowledged
- Opportunity for raising the bar for evidence-informed public health practices

Today's Workshop

- Review of goals, outcomes, and requirements
- Presentations from various individuals/groups:
 - Practices;
 - Tools and Resources;
 - Examples of the Foundational Standard Implementation;
 - Panel on the Population Health Assessment and Surveillance Protocol, 2008; and
 - Discussions to foster collaboration to discuss challenges and opportunities for implementation.
- Electronic evaluation to follow in order to guide strategic planning for resources/activities development to support continued implementation of the Foundational Standard