

OPHS

Foundational Standard

Population Health Assessment and Surveillance

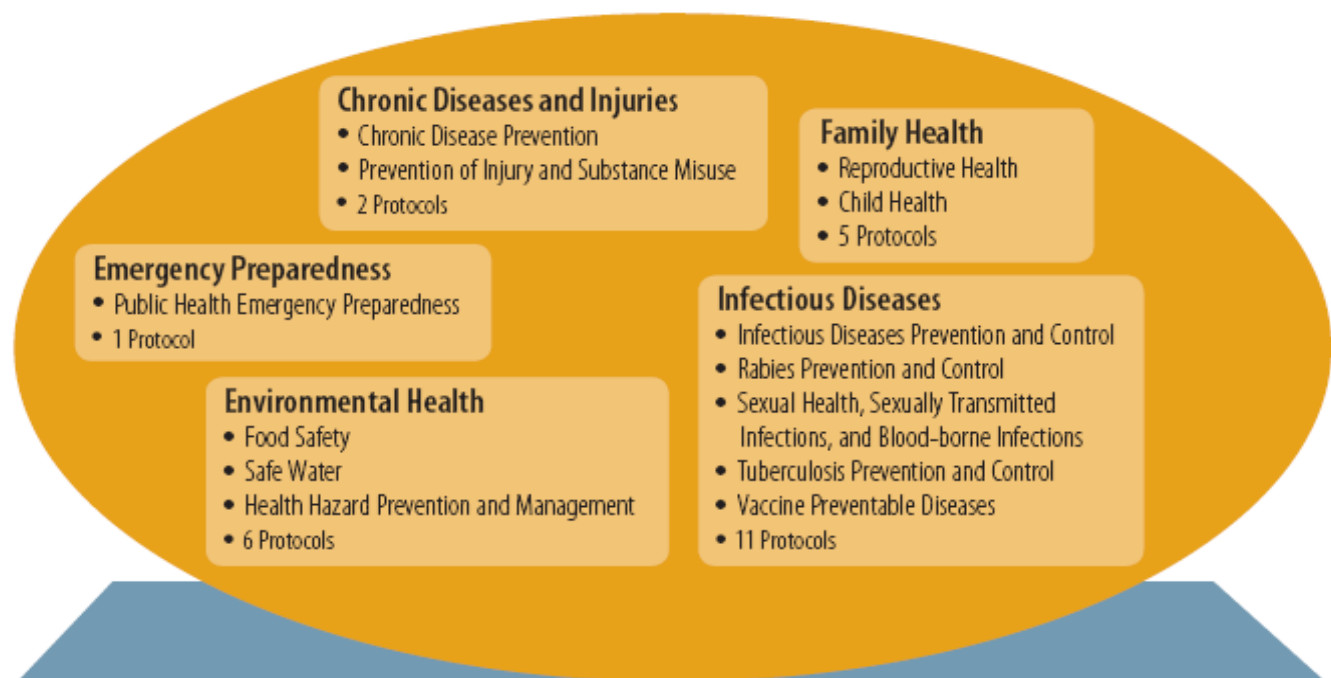
Foundational Standard Workshop
November 14, 2008

Purpose

- The purpose of this presentation is to discuss the requirements of the Foundational Standard Requirements of the OPHS for :
 - Population Health Assessment; and
 - Surveillance.

OPHS "Atlas"

Program Standards and Protocols



Foundational Standard and Protocol

Population Health Assessment
Surveillance
Research and Knowledge Exchange
Program Evaluation
1 Protocol

Principles



Need



Impact



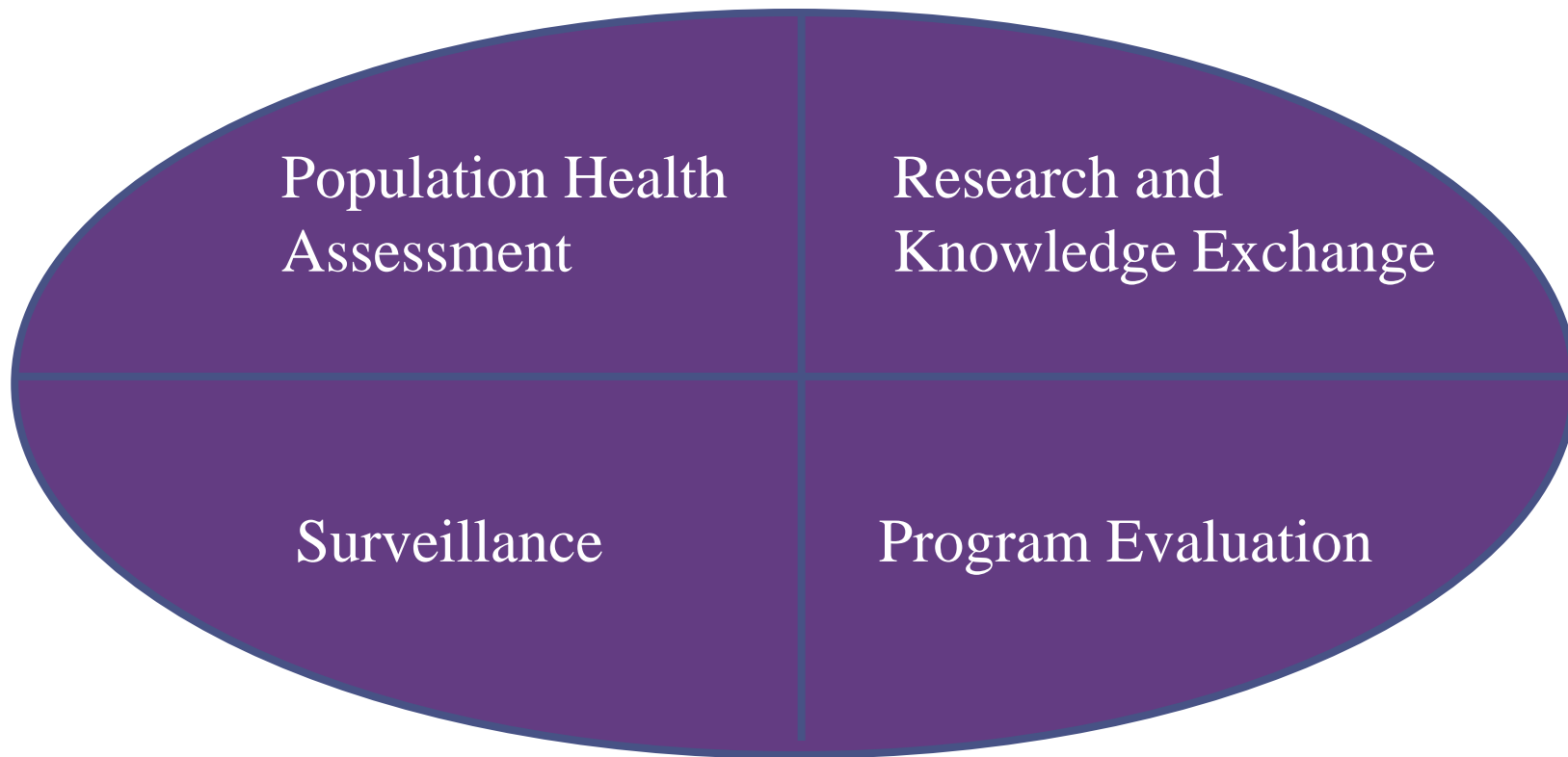
Capacity



Partnership and
Collaboration

The OPHS Foundational Standard

- The OPHS includes a Foundational Standard which is intended to acknowledge and reinforce the importance of foundational public health activities to under-pin the planning, delivery and evaluation of all public health programs and services – including each of the Program Standards in the OPHS



Population Health Assessment

- Population health assessment includes measuring, monitoring, and reporting on the status of a population's health, including determinants of health and health inequities
- Population health assessment provides the information necessary to understand the health of populations through the collaborative development and ongoing maintenance of population health profiles, identification of challenges and opportunities, and monitoring of the health impacts of public health practice

Population Health Assessment Requirements I

- The board of health shall assess current health status, health behaviours, preventive health practices, health care utilization relevant to public health, and demographic indicators in accordance with the *Population Health Assessment and Surveillance Protocol, 2008* (or as current)
- The board of health shall assess trends and changes in local population health in accordance with the *Population Health Assessment and Surveillance Protocol, 2008* (or as current)
- The board of health shall use population health, determinants of health and health inequities information to assess the needs of the local population, including the identification of populations at risk, to determine those groups that would benefit most from public health programs and services (i.e., priority populations)

Population Health Assessment Requirements II

- The board of health shall tailor public health programs and services to meet local population health needs, including those of priority populations to the extent possible based on available resources
- The board of health shall provide population health information including determinants of health and health inequities to the public, community partners, and health care providers, in accordance with the *Population Health Assessment and Surveillance Protocol, 2008* (or as current)

Surveillance

- Surveillance is the systematic and ongoing collection, collation, and analysis of health-related information that is communicated in a timely manner to all who need to know, so that action can be taken
- Surveillance contributes to effective public health program planning, delivery, and management
- Dissemination of surveillance analyses may take the form of reports, advisories, healthy public policy recommendations, alerts, or warnings
- Surveillance has historically been associated with infectious diseases and vaccination programs, but its importance has become increasingly recognized for environmental health issues, child health, reproductive health, chronic disease prevention, and injury prevention

Surveillance Requirements I

- The board of health shall conduct surveillance, including the ongoing collection, collation, analysis, and periodic reporting of population health indicators, as required by the Health Protection and Promotion Act and in accordance with the *Population Health Assessment and Surveillance Protocol, 2008* (or as current)

Surveillance Requirements II

- The board of health shall interpret and use surveillance data to communicate information on risks to relevant audiences in accordance with the following protocols:
 - *Identification, Investigation and Management of Health Hazards Protocol, 2008* (or as current);
 - *Infectious Diseases Protocol, 2008* (or as current);
 - *Population Health Assessment and Surveillance Protocol, 2008* (or as current);
 - *Public Health Emergency Preparedness Protocol, 2008* (or as current); and
 - *Risk Assessment and Inspection of Facilities Protocol, 2008* (or as current).

Foundational Standard Protocol

- The Population Health Assessment and Surveillance Protocol, 2008 accompanies the Foundational Standard
- Operationalizes requirements for the Population Health Assessment and Surveillance components of the Foundational Standard
- Session this afternoon to discuss the Population Health Assessment and Surveillance Protocol, 2008

Changes from MHSPG

- Significant emphasis on epidemiology and health analytics
- Goes beyond the yearly local Health Status Report requirements from the MHPSG and places greater emphasis on context
- Supports integration of population health assessment and surveillance information across all Standards and program areas, and public health functions
- Important for proactive health planning