

OPHS

Foundational Standard

Research and Knowledge Exchange and Program Evaluation

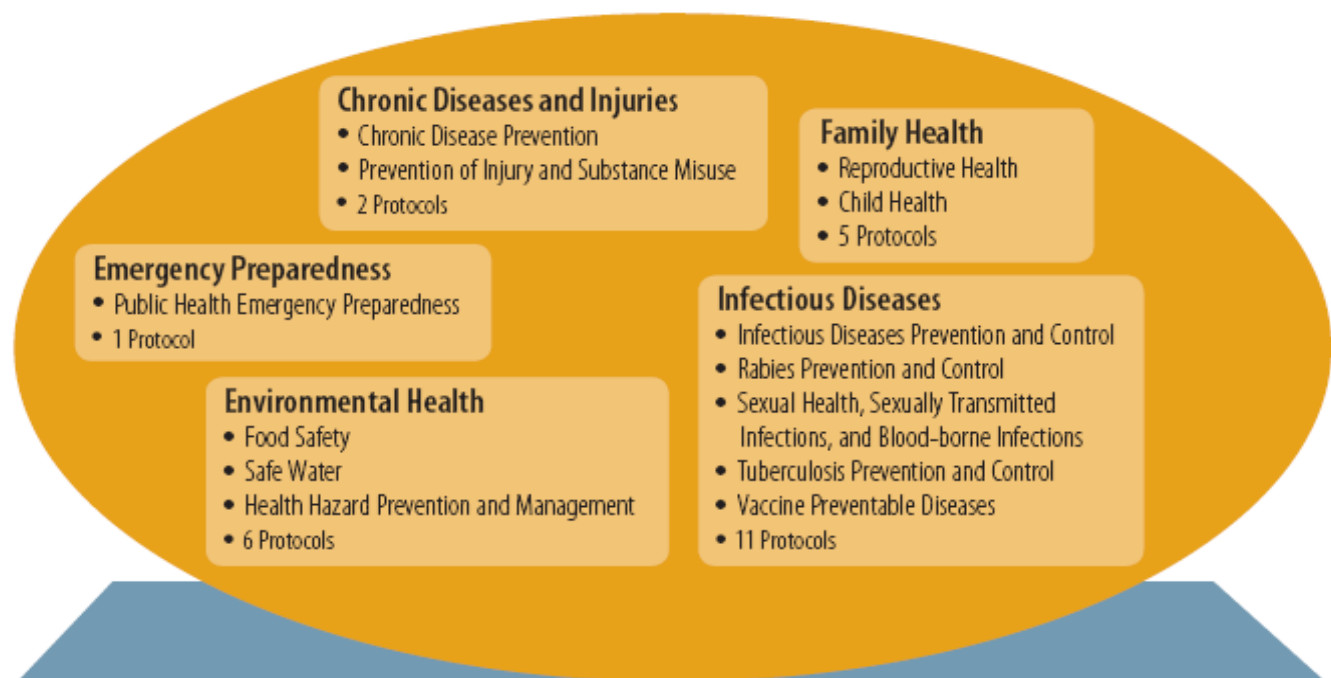
Foundational Standard Workshop
November 14, 2008

Purpose

- The purpose of this presentation is to discuss the requirements of the Foundational Standard Requirements of the OPHS for :
 - Research and Knowledge Exchange; and
 - Program Evaluation.

OPHS "Atlas"

Program Standards and Protocols



Foundational Standard and Protocol

Population Health Assessment
Surveillance
Research and Knowledge Exchange
Program Evaluation
1 Protocol

Principles



Need



Impact



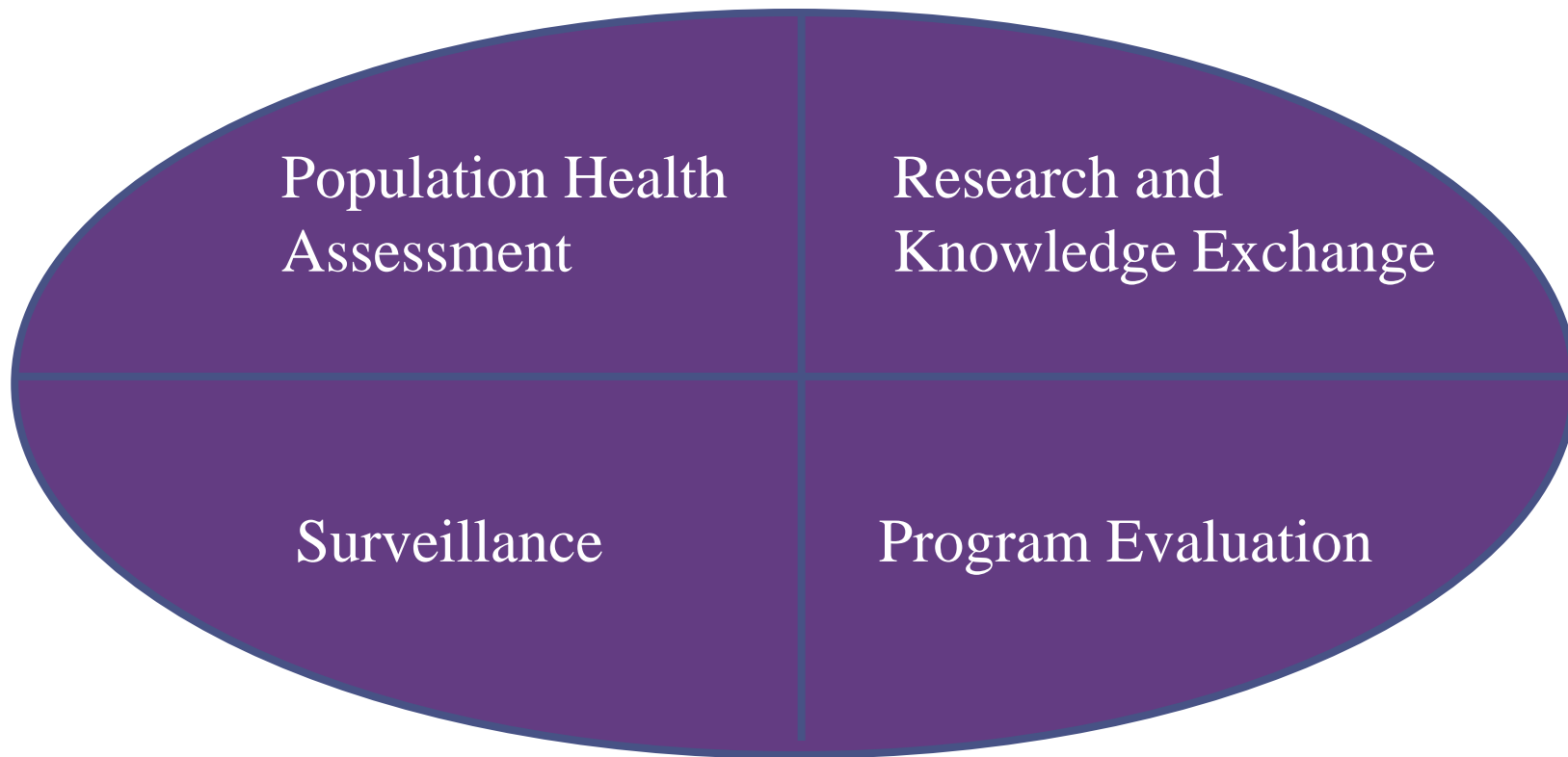
Capacity



Partnership and
Collaboration

The OPHS Foundational Standard

- The OPHS includes a Foundational Standard which is intended to acknowledge and reinforce the importance of foundational public health activities to under-pin the planning, delivery and evaluation of all public health programs and services – including each of the Program Standards in the OPHS



Research and Knowledge Exchange

- Exploring an issue or investigating a question is accomplished through research — the organized and purposeful collection, analysis, and interpretation of data
- Research may involve the primary collection of new data or the analysis or synthesis of existing data and research findings
- Knowledge exchange is collaborative problem-solving among public health practitioners, researchers, and decision-makers, which takes place through linkage and exchange
- Results in mutual learning through the process of planning, producing, disseminating, and applying existing or new research in decision-making

Research and Knowledge Exchange Requirements

- The board of health shall engage in knowledge exchange activities with public health practitioners, policy-makers, community partners, health care providers, and the public regarding factors that determine the health of the population and support effective public health practice gained through population health assessment, surveillance, research, and program evaluation
- The board of health shall foster relationships with community researchers, academic partners, and other appropriate organizations to support public health research and knowledge exchange
- The board of health shall engage in public health research activities, which may include those conducted by the board of health alone or in partnership or collaboration with other organizations

Program Evaluation

- Program evaluation is the systematic gathering, analysis, and reporting of data about a program to assist in decision-making
- It includes quantitative, qualitative, and mixed-method approaches
- Program evaluation produces the information needed to support the establishment of new programs and services (needs assessment); assess whether evidence-informed programs are carried out with the necessary reach, intensity, and duration (process evaluation); or document the effectiveness and efficiency of programs and services (outcome evaluation)

Program Evaluation Requirements

- The board of health shall routinely monitor program activities and outcomes to assess and improve the implementation and effectiveness of programs and services, including collection, analysis, and periodic reporting of indicators related to inputs, resources, implementation processes, reach, outputs, and outcomes
- The board of health shall conduct program evaluations when new interventions are developed or implemented, or when there is evidence of unexpected operational issues or program results, to understand the linkages between inputs, activities, outputs, and outcomes
- The board of health shall use a range of methods to facilitate public health practitioners' and policy-makers' awareness of the factors that contribute to program effectiveness

Changes from MHSPG

- The Program Evaluation component corresponds directly to MHPSPG Program Planning and Evaluation Standard (General Standards)
 - However, there are differences in the program evaluation requirements since 1997
- The Research and Knowledge Exchange component is new